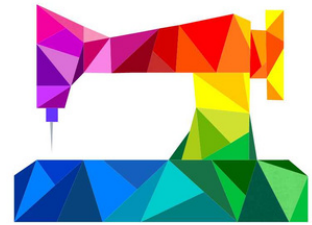


Quilters Guild of the Bluegrass

Monthly Newsletter

February 2026



Officers

President - Liz Kingsland

Liz.kingsland@uky@edu

QGBG.president@gmail.com

Vice President - Kellie Wade

kelliewade60@gmail.com

QGBG.vicepres@gmail.com

Vice President Elect - Mary Beth Dunn

xombdunn@hotmail.com

Secretary - Pam Johnston

Pam16johnston@yahoo.com

QGBG.secretary@gmail.com

Treasurer - Sarah Frye

sfrye@ckys.edu

QGBG.treasurer@gmail.com

QGBG.Commteam@gmail.com

For Newsletter help or if you
are unsure who to contact

Philanthropy:

an act or gift done or made for
humanitarian purposes.

FEBRUARY 10TH GUILD MEETING

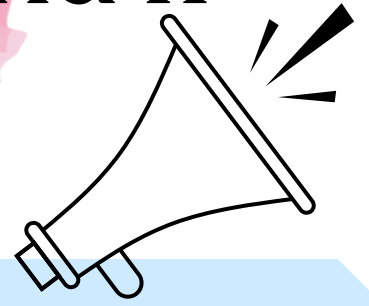
- **6:00pm** -Refreshments: Galentine's Tea
- **6:30pm** - Meeting
 - Quilty Minute: Sarah Frye and Fran O'Connor
 - Speakers: Methodist Children's Home and The Nest
- **Block of the Month Lotto:** Irish Chain
- **Show and Tell:**
 - *Sharing First:* Valentines themed quilts or quilted items
 - *Sharing Second:* Any Quilts or Quilted Items



Looking Ahead

- February 13th - Sit and Sew
- February 14th - Sit and Sew; Saturday School
- March 10th - Guild Meeting
- May 30th - Community Quilt Event
- April 10th & 11th - The Bluegrass Quilt Show
- August 15th - Guild Yard Sale

Quilt April 10th and 11th SHOW 2026



The Bluegrass Quilt Show Call for Entries

Guild members, it's time to shine! Entries are now open for **The Bluegrass Quilt Show**, and you are invited to share your work with our quilting community.

Whether your passion is traditional, modern, or art quilts, a wide range of styles and stories are welcomed. This show celebrates creativity, craftsmanship, and the many ways you Celebrate! stitched into every quilt.

➡ **Entry guidelines, important dates, and the entry form are available on The Bluegrass Quilt Show Facebook page.** Please visit Facebook for complete information and submission instructions.

We all look forward to showcasing the quilts being created within our quilting community and sharing the stories they tell!



Please Like and
Share

The Bluegrass
Quilt Show
Facebook Page



Opportunity Quilt

Please get tickets to sell our beautiful quilt from Mary Beth Dunn.

If you have a site where we can set up to sell tickets, let her know and we can make the quilt available.

A flyer for the quilt is included with this newsletter for sharing

Quilt April 10th and 11th SHOW 2026

Volunteers Needed

We are in need of committee members for the show.

Please contact Vickie Coleman for more information:

Vickiecoleman@aol.com

A Call to Enter Celebrate: YOU

Quilters Guild of the Bluegrass
Quilt Challenge
Sponsored by Thomas Sewing
Center

**Please see pages 5 & 6 for
challenge rules, deadlines,
prize info and more.**

Entry forms are now available at the monthly guild meetings. Lissa is able to start taking quilt entries at the February meeting. Please consider turning in the entry forms as early as possible so Lissa can retype the artist statements before the show (you can turn in forms without the quilt)



Opportunity Quilt

presented by The Quilters Guild of the BlueGrass
at The Bluegrass Quilt Show

Our Quilt will
be awarded
by drawing
on Saturday
April 11th at
Fayette
County
Extension
Building



Benefiting The Gina Andreoli
Scholarship Fund for Nursing and
the pursuit of Quilting Education



Celebrate:YOU

Quilters Guild of the Bluegrass Quilt Challenge

Sponsored by Thomas Sewing Center



**What makes you special?
What is something you love and
want to share?
What do you enjoy in your life?
Is there something that you just
want to sing about to
everyone?**

The 2026 quilt challenge is an opportunity to share with the world something that you find worth celebrating in your life.

It can be something personal about yourself, or it can be an event that you love to go to.

It can be enjoying flowers in the garden or listening to music. The possibilities are endless.

Timeline

November 6th, 2025 - Challenge announced

January 13th, 2026 - Entry forms will be available.

February 10th, 2026 - Entries open - entries may be submitted starting at this meeting. Entries must be turned in to Lissa.

April 7th, 2026 - Entries close - all entries must be turned in to Lissa by this date.

April 14th, 2026 - All quilts will be returned at the April meeting if not picked up after the show. *

Challenge Rules

- Only members of the Quilters Guild of the Bluegrass are eligible to enter.
- Quilts must measure 30" wide by 40" long.
- Quilts must consist of three layers quilted together, a finished edge, and must have a hanging sleeve.
- Quilts must be made between January 2025 and April 7th, 2026.
- Quilts must be free from animal hair and odors and in a clean condition.
- Quilts must have a label on the back including the artist's name and contact information, name of quilt, and year it was made.
- The title of the quilt must start "Celebrate: (enter the celebration or the reason of the celebration)" Submissions must include an artist statement of no more than 100 words.
- All methods of quilt making are welcome (pieced, paper pieced, appliqué, hand stitched etc)
- Quilt must be made entirely by one maker (creation of top through quilting and finishing).





Celebrate: YOU

Quilters Guild of the Bluegrass Quilt Challenge

Sponsored by Thomas Sewing Center

Prizes

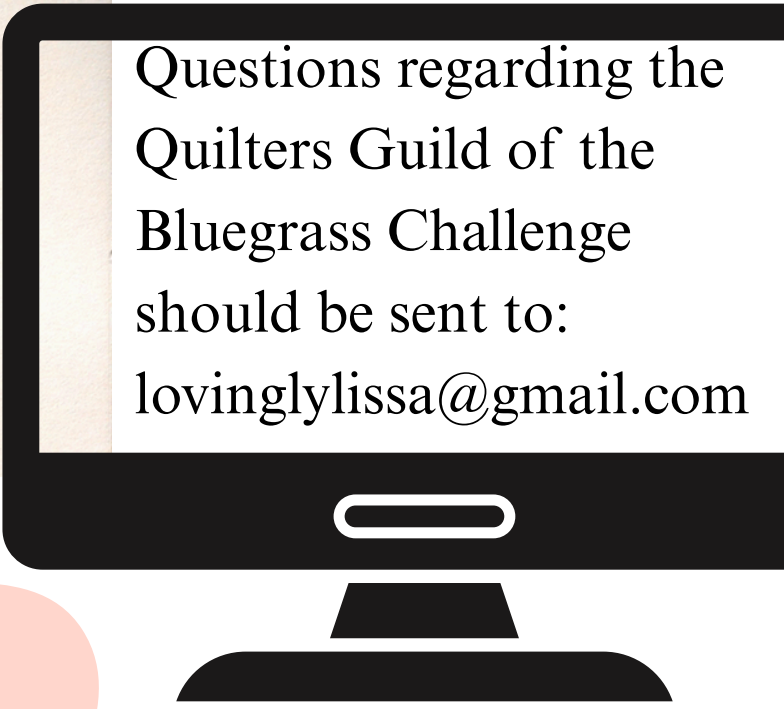
Prizes will be awarded through audience voting.

1st Prize - \$100 gift card to Thomas Sewing Center.

2nd Prize - \$50 gift card to Thomas Sewing Center.

3rd Prize - \$25 gift card to Thomas Sewing Center.

Three prizes are being generously sponsored by Thomas Sewing Center.

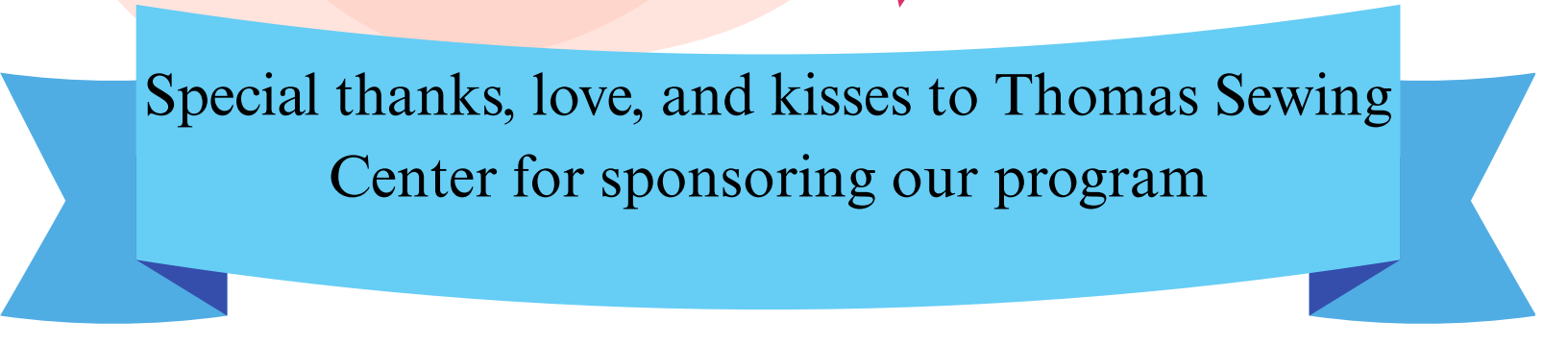
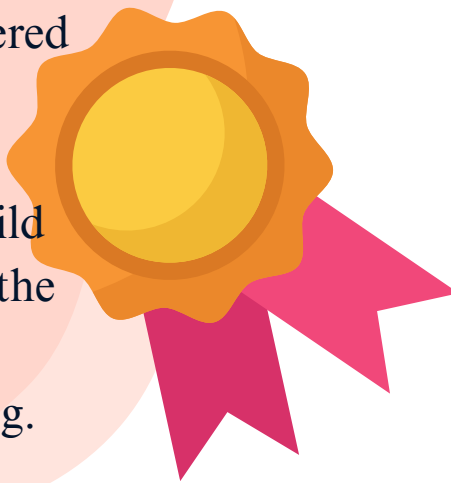


Questions regarding the Quilters Guild of the Bluegrass Challenge should be sent to:
lovinglylissa@gmail.com

AQS Ultimate Guild Challenge

The top 8 voted quilts will be entered into the AQS Ultimate Guild Challenge.

*Quilts going to the Ultimate Guild Challenge will be turned over to the UGC coordinator by the April meeting.



Special thanks, love, and kisses to Thomas Sewing Center for sponsoring our program

Saturday School

Taught by
Jennifer Olsen
Sashing and Simple
Borders Lesson



February 13th at 11am

February 14th at 11am



BOOK CLUB

The Book Club will be meeting on
February 23rd, Monday, at noon at the
Extension Office.

For February, we will be discussing:

The Devil in the White City

By Erik Larson.

Community Outreach

I want to thank everyone who took time to fill out and return the Community Outreach Program Survey; assessing members as to how to continue collecting donations for Joy of Giving and Military Missions in the coming year. The majority of votes received voted to continue with monthly donation collections for Joy of Giving and Military Missions. I will start Joy of Giving donation collection at the quilt guild meeting in **March 2026**.

Suggestions of monthly requested donations for Joy of Giving will be listed in our newsletter. You may donate one or more items if you wish. If at any time you have questions or concerns related to the donations or the Joy of Giving program, please contact me.

Additionally, I am in need of blank note cards or thank you cards for Military Missions.

Thank You

Pam Pfister

We are continuing to collect washed,
label free amber prescription bottles
with lids

Items to bring to the **March meeting**



- Readers (all strengths)
- Large Print Word Search Books
- Pens
- Body Wash (men and women both)



2026 One Hour Challenge



- Use the One Hour Challenge form* to make a list of 12 projects you want to work on this year
- Don't have 12 projects? No problem at all. You can add to your list throughout the year by emailing or texting Liz Kingsland
- Text or email Liz or post to the Guild Facebook page when you have worked on one project from your list for at least an hour during the month. You will be entered in a drawing at the guild meeting.
- Need a little bit more time? You are able to work on the same project over multiple months.
- Finished that project? You get two entries in the drawing!

*Forms are in the monthly guild emails

Volunteer Hours

The tallying of volunteer hours is the most important action you can do for our community. Why? Because each hour is converted into money and returned to our extension. What are volunteer hours? Anything that would cost someone money if you didn't volunteer to do it. These services might include:

Watching grandchildren

Volunteering at church

Helping a sick or shut in person

Pet watching

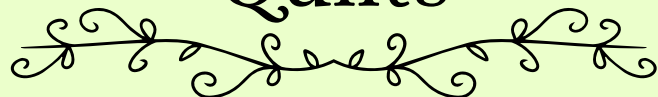
Sewing charity items

Attending homemaker or quilt guild meetings

Preparing for meetings or events

Kellie Wade and Paula Markus, your Leadership Development Chairs are responsible for collecting and tallying your hours. So please try to turn them into Paula or Kellie each month. We will be using brightly colored sheets for you to record your hours on. The extension year starts July 1, 2025 and ends June 30, 2026. By turning your sheets in every month will help us keep track of hours and not be bombarded with it all at the end of the year. Then we will recognize members for the services at the county, region and state levels. Thank - you for your cooperation.

Community Quilts



Our Community Quilts Bee group will continue this year as we work to create & distribute quilts within Lexington. We have had a great time making friends and learning from each other! Our group is not exclusive—it is organized to help distribute quilt projects within the guild and to deliver the completed quilts.

Thank you to each of you that have participated in any way, large or small. **If you would like to either be more hands-on with or to take a step back from Community Quilts Bee, just let me know.**

We will continue to have kits & sandwiches available at meetings and Sit & Sews for members pick up.



Happy Sewing!

Jennifer Olsen

859-300-2016

The Gina Andreoli Scholarship

Applications are now open,
forms will be available at the guild meetings.

For more information please contact:

Eve Adams

Adam's.eve@yahoo.com

or

Liz Kingsland

Liz.kingsland@uky.edu

Block of the Month Lotto

by Lissa LaGreca

The Block for February is Irish Charm



Can we get to 40 shades
of Green?

Break out your greenest
blender to add to the focus
fabric to create a 12"
Single Irish Chain. Each \$1
kit will come with easy to
understand instructions
and the floral fabric to
create one block.