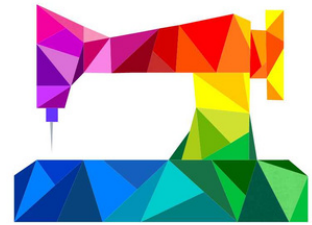


Quilters Guild of the Bluegrass

Monthly Newsletter

January 2026



Officers

President - Liz Kingsland

Liz.kingsland@uky.edu
QGBG.president@gmail.com

Vice President - Kellie Wade

kelliewade60@gmail.com
QGBG.vicepres@gmail.com

Vice President Elect - Mary Beth Dunn

xombdunn@hotmail.com

Secretary - Pam Johnston

Pam16johnston@yahoo.com
QGBG.secretary@gmail.com

Treasurer - Sarah Frye

sfrye@ckys.edu
QGBG.treasurer@gmail.com

QGBG.Commteam@gmail.com

For Newsletter help or if you
are unsure who to contact



JANUARY 13TH GUILD MEETING

- **6:00pm** - Refreshments: Salad and Surprise
- **6:30pm** - Meeting
 - **Speaker** - Lilly Matthews
 - Appliqué Techniques
- **Block of the Month Lotto:** Football Four Squares
- **Show and Tell:** Any Quilts or Quilted Items



Looking Ahead

January 10th - Duffle Bag Service
Project

January 16th - Sit and Sew

January 17th - Sit and Sew;
Saturday School

February 10th - Guild Meeting

Saturday School

Taught by Liz Kingsland



BOOK CLUB

The Book Club will be meeting on January 12th, Monday, at noon at the Extension Office.

For the January, we will be discussing:

The Art Thief

By Michael Finkel



Hold it Bag

Liz will be teaching how to make this adorable and easy to sew bag on both Sit and Sew days.

Friday January 16th at 1:30pm

&

Saturday January 17th at 10:30am

Supplies List

- (2) Contrasting Fat Quarters
- 1 yard of Ribbon

Please bring your sewing machine and basic sewing kits (thread, pins, seam ripper, scissors etc.)

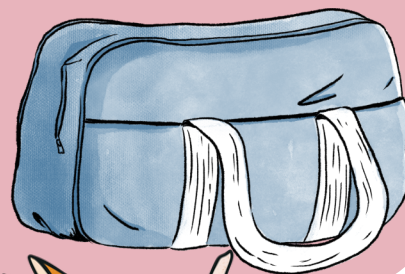
Duffle Bag Service Project

Hosted by Sierra Smith

January 10th starting at 9am.

No child should have to put their possessions in a trash bag.

Come assist in making duffle bags for the children in the foster system. All skill levels are welcome. Fabric will be provided. There are opportunities for everyone to participate from ironing to sewing.



Quilt April 10th and 11th SHOW 2026



A Call to Enter **Celebrate: YOU**

Quilters Guild of the Bluegrass
Quilt Challenge
Sponsored by Thomas Sewing
Center

**Please see pages 6 & 7
for challenge rules,
deadlines, prize info
and more**

Opportunity Quilt

Please get tickets to sell our
beautiful quilt from Mary Beth
Dunn.

If you have a site where we can set
up to sell tickets, let her know and
we can make the quilt available.

A flyer for the quilt is at the end of
this newsletter for sharing

Volunteers Needed

We are in need of committee
members for the show.
Please see Vickie Coleman
for more information:
Vickiecoleman@aol.com



Community Outreach

With the generous donations of our members we were able to help serve two nursing home facilities residents. Our outreach efforts assisted over 250 nursing home residents. Thank to everyone that donated and those that came to Sayre Village to spread cheer. We will start donations for 2026 soon.

We are continuing to collect washed label free amber prescription bottles with lids

2026 One Hour Challenge



- Use the One Hour Challenge form* to make a list of 12 projects you want to work on this year.
- Don't have 12 projects? No problem at all. You can add to your list throughout the year by emailing or texting Liz Kingsland
- Text or email Liz or post to the Guild Facebook page when you have **worked on one project from your list for at least an hour during the month.** You will be entered in a drawing at the guild meeting.
- Need a little bit more time? You are able to work on the same project over multiple months.
- Finished that project? You get two entries in the drawing!

*Forms will be given out at the January meeting

Block of the Month Lotto

by Lissa LaGreca

The Block for January is Football Four Patch



Celebrate the Big Game with your favorite team!!

Each bag will contain the pattern and football fabric for \$1. You supply the additional fabrics and represent your favorite football team (Pro, College, High School, or kid leagues) using fabric from your stash. You can use two or more colors, using solids, blenders or even team fabric!

GO SPORTS!!!



Block of the Month Bee

A “Wrap it Up” lunch on January 30 at the Extension Office at 11:30.

Everyone who worked on this Block of The Month Bee (even if they did not finish) is invited. Liz will be providing a light lunch, so please send her RSVP by email or text to be counted.



The Gina Andreoli Scholarship

**Applications are now open,
Forms will be available at the guild meetings.**

For more information please contact:

Eve Adams

Adam's.eve@yahoo.com

or

Liz Kingsland

Liz.kingsland@uky.edu

Volunteer Hours

The tallying of volunteer hours is the most important action you can do for our community. Why? Because each hour is converted into money and returned to our extension. What are volunteer hours? Anything that would cost someone money if you didn't volunteer to do it. These services might include:

Watching grandchildren

Volunteering at church

Helping a sick or shut in person

Pet watching

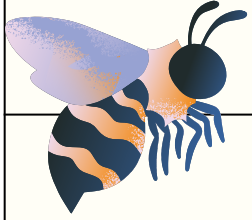
Sewing charity items

Attending homemaker or quilt guild meetings

Preparing for meetings or events

Kellie Wade and Paula Markus, your Leadership Development Chairs are responsible for collecting and tallying your hours. So please try to turn them into Paula or Kellie each month. We will be using brightly colored sheets for you to record your hours on. The extension year starts July 1, 2025 and ends June 30, 2026. By turning your sheets in every month will help us keep track of hours and not be bombarded with it all at the end of the year. Then we will recognize members for the services at the county, region and state levels. Thank - you for your cooperation.

Recognizing and Thanking Our Community Quilts Bee



To our incredible Community Quilts Bee: thank you for the dedication, creativity, and generosity you've poured into this year's work. Every quilt, every block, every hour of cutting, piecing, quilting, organizing, and delivering reflects your commitment to our community.

Your teamwork, your kindness, and quilting skills have made it possible for us to reach an extraordinary milestone —400 quilts!-- and to touch lives across every stage of life.

A special thank you to each of our busy bees for the heart you bring to this effort. Your contributions matter, and they are deeply appreciated.

Fran O'Connor—my humble, tireless, generous and diligent partner!

Barb McGovern

Charlene Clay

Cindy Maynard

Diane Fearn-Desrosiers

Jackie Scott

Lillian Matthews

Lisa Thomas

Marie Hancock

McCall Koerper

Nicole Kelleher

Pam Johnston

Paula Markus

Peggy Knapp

Rhonda Tiefert

Ruth Berry

Shirley Caldwell

Sue Lucas

Teri Cox

The benefiting organizations in our
community represent the cradle-to-
grave recipients:

Ronald McDonald House

The Nest

Methodist Children's Home

Eastern State Hospital

North Carolina Flood Relief

Taylor Manor

Fayette County Sheriff's Office

Chrysalis House

Homestead Post Acute Care



Opportunity Quilt

presented by The Quilters Guild of the BlueGrass
at The Bluegrass Quilt Show

Our Quilt will
be awarded
by drawing
on Saturday
April 11th at
Fayette
County
Extension
Building



Benefiting The Gina Andreoli
Scholarship Fund for Nursing and
the pursuit of Quilting Education



Celebrate:YOU

Quilters Guild of the Bluegrass Quilt Challenge

Sponsored by Thomas Sewing Center



**What makes you special?
What is something you love and
want to share?
What do you enjoy in your life?
Is there something that you just
want to sing about to
everyone?**

The 2026 quilt challenge is an opportunity to share with the world something that you find worth celebrating in your life.

It can be something personal about yourself, or it can be an event that you love to go to.

It can be enjoying flowers in the garden or listening to music. The possibilities are endless.

Timeline

November 6th, 2025 - Challenge announced

January 13th, 2026 - Entry forms will be available.

February 10th, 2026 - Entries open - entries may be submitted starting at this meeting. Entries must be turned in to Lissa.

April 7th, 2026 - Entries close - all entries must be turned in to Lissa by this date.

April 14th, 2026 - All quilts will be returned at the April meeting if not picked up after the show. *

Challenge Rules

- Only members of the Quilters Guild of the Bluegrass are eligible to enter.
- Quilts must measure 30" wide by 40" long.
- Quilts must consist of three layers quilted together, a finished edge, and must have a hanging sleeve.
- Quilts must be made between January 2025 and April 7th, 2026.
- Quilts must be free from animal hair and odors and in a clean condition.
- Quilts must have a label on the back including the artist's name and contact information, name of quilt, and year it was made.
- The title of the quilt must start "Celebrate: (enter the celebration or the reason of the celebration)" Submissions must include an artist statement of no more than 100 words.
- All methods of quilt making are welcome (pieced, paper pieced, appliqué, hand stitched etc)
- Quilt must be made entirely by one maker (creation of top through quilting and finishing).





Celebrate: YOU

Quilters Guild of the Bluegrass Quilt Challenge

Sponsored by Thomas Sewing Center

Prizes

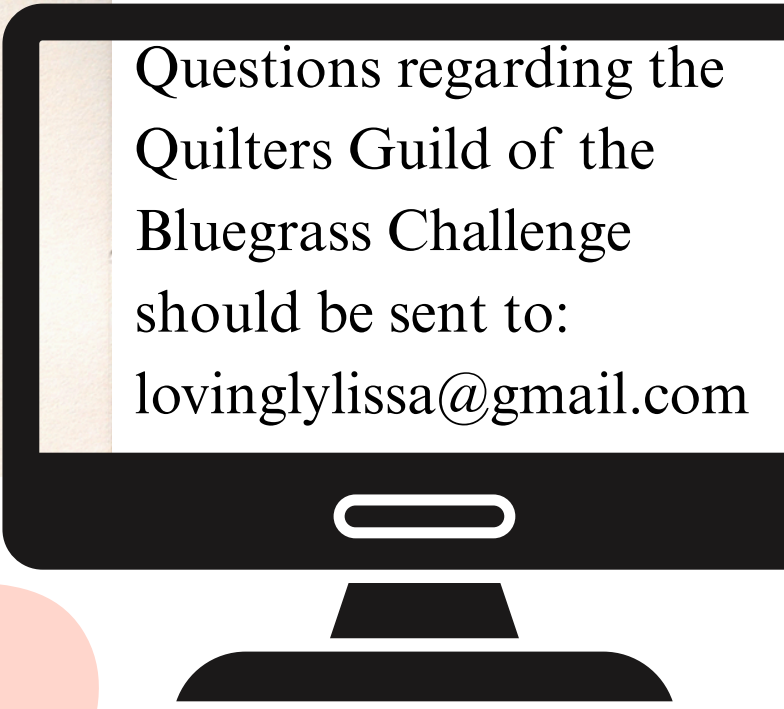
Prizes will be awarded through audience voting.

1st Prize - \$100 gift card to Thomas Sewing Center.

2nd Prize - \$50 gift card to Thomas Sewing Center.

3rd Prize - \$25 gift card to Thomas Sewing Center.

Three prizes are being generously sponsored by Thomas Sewing Center.

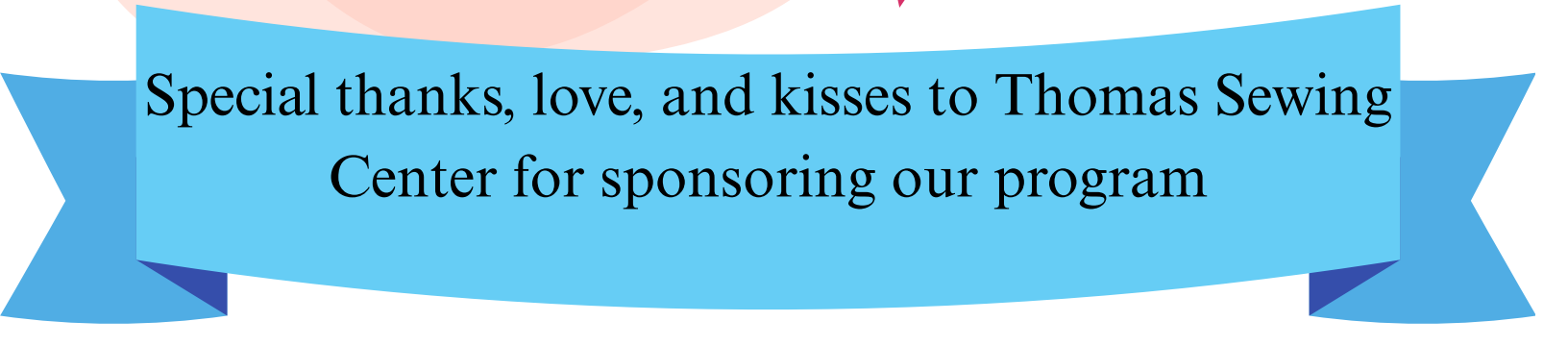
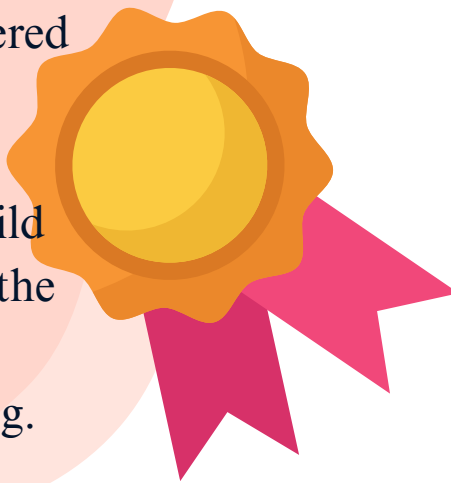


Questions regarding the Quilters Guild of the Bluegrass Challenge should be sent to:
lovinglylissa@gmail.com

AQS Ultimate Guild Challenge

The top 8 voted quilts will be entered into the AQS Ultimate Guild Challenge.

*Quilts going to the Ultimate Guild Challenge will be turned over to the UGC coordinator by the April meeting.



Special thanks, love, and kisses to Thomas Sewing Center for sponsoring our program