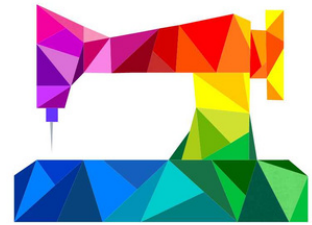


Quilters Guild of the Bluegrass

Monthly Newsletter

November 2025



Officers

President

Liz Kingsland

Liz.kingsland@uky.edu

QGBG.president@gmail.com

Vice President

Kellie Wade

kelliewade60@gmail.com

QGBG.vicepresz@gmail.com

Vice President - Elect

Mary Beth Dunn

xombdunn@hotmail.com

Secretary

Pam Johnston

Pam16johnston@yahoo.com

QGBG.secretary@gmail.com

Treasurer

Sarah Frye

sfrye@ckys.edu

QGBG.treasurer@gmail.com

QGBG.Commteam@gmail.com

For Newsletter help or if you
are unsure who to contact



NOVEMBER 13TH (THURSDAY) GUILD MEETING

- 6:00pm -Potato Bar
- 6:30pm - Meeting
- Speaker: Cindy Moore
- Denim Creations
- Block of the Month Lotto: Quilting Thankfulness
- Show and Tell: Everything is welcomed



Looking Ahead

November 14th - Sit and Sew

November 15th - Sit and Sew;

Saturday School at 10am *

*see page 2

December 9th- Guild Meeting

December 10th - Joy of Giving at

Sayre Christian Village 2pm

No Sit and Sew in December



December Dinner Fee

We will be collecting **\$12** per
member for our Traditional
Turkey Dinner scheduled for
December. Please pay by or at
the November Meeting to be
counted.

Sit and Sew Saturday School

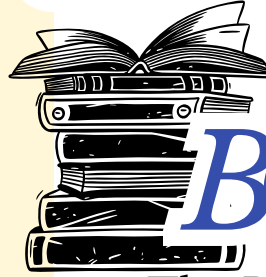


SARAH FRYE WILL BE TEACHING HOW TO MAKE THESE PLACEMAT BAGS AT SATURDAY SCHOOL ON SATURDAY, NOVEMBER 15 STARTING AT 10AM AND CONTINUING THROUGH OUT SIT AND SEW.

KITS WITH A PLACEMAT, ZIPPER AND RIBBON WILL BE AVAILABLE FOR \$5.00.

SUPPLIES NEEDED:

A RECTANGULAR PLACEMAT, A 14" ZIPPER AND 8" RIBBON.



BOOK CLUB

The Book Club will be meeting every 3rd Monday of the Month at Noon at the Extention Office For the November, we will be discussing:

The Women by Kristen Hannah



December Meeting Dinner

If you are unable to make the November Meeting on Thursday Nov.13th , please mail a check to **Treasure Sarah Frye at 7 Churchill Dr. Winchester, KY 40391**

Please make checks out to the Guild, QGBG. Thank you.

Payment must be recieved by Dec. 1 to be inlcuded.

For desserts, we will be doing a potluck.

A Call For Help

We have been asked by Mary Colvin Homemaker County Food and Health Chairperson, one of our own members, to participate in a food drive for God's Pantry. Due to the government shutdown they have a greater need. One of the county objectives this year is hunger and food insecurity. We will have a jar for cash donations for God's Pantry at the registration desk. If you want to make out a check please make it to Gods Pantry.

Quilt April 10th and 11th SHOW 2026



Big News!

**A new Quilt Challenge
for the April Quilt
Show will be
presented at the next
monthly meeting. You
won't want to miss
this news!**

Opportunity Quilt

Please get tickets to sell our
beautiful quilt from Mary Beth
Dunn.

If you have a site where we can set
up to sell tickets, let her know and
we can make the quilt available.

A flyer for the quilt is at the end of
this newsletter for sharing

Quilt Show Planning Meeting

November 11th at Jason's Deli
2:30pm.

134 Malibu Dr Lexington, KY
40503

Please join us to continue the
planning process for our first quilt
show.



Community Outreach

Military Mission:

We are collecting money for postage.
Any amount you can donate would be greatly appreciated.

A Tree of Giving will be set up in the foyer of the Extension Office this month until mid December. We will be looking to decorate the tree with:

Gloves and Mittens for Children 5 years and younger

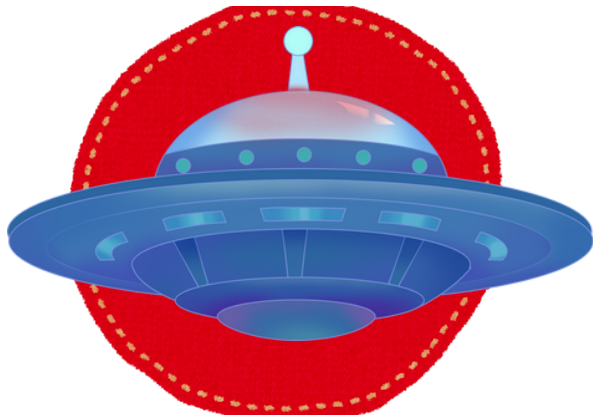
Joy of Giving is on December 10th at 2pm

We will be meeting out front of Sayre Christian Village.

3775 Belleau Wood Drive Lexington KY 40517

We are continuing to collect washed label free amber prescription bottles with lids

2025 UFO Challenge



List your Unfinished Projects; number them 1-12. Work your projects as :

- The November project is #8
- Text or email Liz Kingsland or post to the Guild Facebook page when you have worked on #8 for at least an hour during the month
- You will be entered in a drawing at the guild meeting. Finished that project? You get entries in the drawing!

Block of the Month Lotto

by Lissa LaGreca

December's Block is Holiday Spirit Pinwheel



This month we are going to keep it simple with a pinwheel! All fabric will be provided, you just need to cut and sew one pinwheel block!

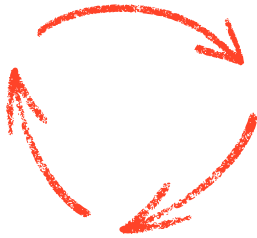
Each Block Lotto bag will contain directions and four 5" charms to create one 8 1/2" pinwheel block and costs \$1.

Please see Lissa to turn in blocks and purchase new ones **BEFORE** we draw a winner of the previous month's blocks.

QUILT BEES



ROUND ROBIN



Block of the Month

Liz will be reaching out to bee members individually. Please keep an eye out for her emails.

Only two more patterns available before we can have them done and ready to show to the guild as one big Show and Tell

Community Quilts

A HUGE THANK YOU to all of you in the guild for your piecing, quilting & binding efforts! We have a giant stack of quilts to take to the Nest for their holiday event as well as several others that will make nice donations to Homestead Nursing Home, Ronald McDonald House and Methodist Children's home. Your generosity and care have been so encouraging!

As we head into the holidays, we will be donating the quilts and taking a much-needed rest from our labors. **If you have quilted or bound a quilt, please be so kind as to turn it in at the November meeting.** We will be finishing up any binding and then checking our list twice before we head out in our sleigh to make deliveries.

Our Bee group has had a great time getting to know each other better and learning new skills as we work on the Community Quilt projects. We want to wish you and yours a very Happy Thanksgiving—enjoy family time & eat lots of turkey & pumpkin pie!

Mystery Quilts



Congratulations! The Mystery has been solved. Sarah will be emailing the final step, on how to face the quilt this month. We can't wait to see how everyone's quilt has turned out.



Opportunity Quilt

presented by The Quilters Guild of the BlueGrass
at The Bluegrass Quilt Show

Our Quilt will
be awarded
by drawing
on Saturday
April 11th at
Fayette
County
Extension
Building



Benefiting The Gina Andreoli
Scholarship Fund for Nursing and
the pursuit of Quilting Education