

Strip Applique – Landscape Scenes

Class price of \$35 is included with the cost of kit.

Non QGBG – add \$10 to price shown

Class Date – June 12, 2019

Fayette Extension Center

10:00am – 4:00pm

Strip Applique - First Light - \$65



Strip Applique - Irises at Dawn – \$65



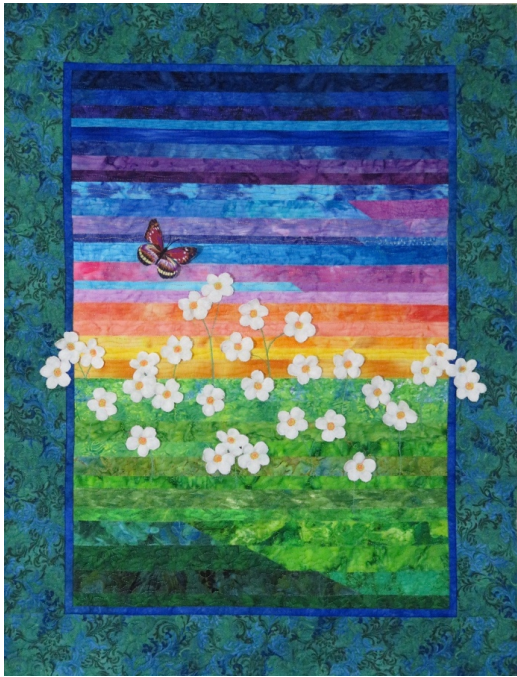
Strip Applique - Last Light - \$65



Strip Applique – Spring Meadow - \$60



Strip Applique - Summer Dreams - \$60



Strip Applique Class Supply List

- Iron – each person will need one!
 - A light pad to protect the table tops from the pressing, this can be a thick bath towel or folded sheets, etc. (This is for lightly basting strips in place and should be at least 22 x 26 inches.)
 - Ironing board – for final fusing with steam
 - Press cloth – cloth not Teflon – steam must go through it
 - Rotary ruler, mat and cutter
 - 1.5 yards Wonder Under or another paper backed fusible web, Steam a Seam, etc. (Avoid Heat and Bond)
 - Glue stick for paper – Elmer's is a good brand. Avoid the kind that go on purple and dry clear
 - Sewing machine in good working order
 - Zigzag foot
 - 70/10 Sharps needle (for use with the following thread and zigzag stitch)
 - Monofilament or clear polyester thread and neutral light weight bobbin thread
- *Dark monofilament thread with dark bobbin thread

- Small scissors
- Light and dark green thread for stitching down flower stems. (Or you can use monofilament).
- White and yellow threads for stitching down the flowers and flower centers
- Any fabrics and scraps which might work into the landscape – to add variety to all the class projects - this is optional. Look at the project picture and check to see if you have any fabrics which might blend in.

* Dark pencil or pen for tracing patterns

** Brown Sharpie Fine Point

*** If choosing Last Light and First Light projects**

**** For students choosing the First Light project**

Project kits will not contain the exact same fabrics which are used in my quilt – this would be impossible. They will come as close as possible though and I'll make every effort to insure they will be pretty landscapes!

We will be sewing by the end of the day, it is not necessary to set up your sewing machine when you first get to class. You'll need table space for cutting strips and a place to lay out your foundation as you design. This space will have the towel or folded sheet to protect the table top.

-Important -

You will need to be able to use monofilament thread in a zig-zag stitch. Please make sure your sewing machine is in good working order and familiarize yourself with this thread – it can cause tension issues. (For both you and your machine!)